

CWA – Historical / Critical Thinking Skill: Analyzing Evidence

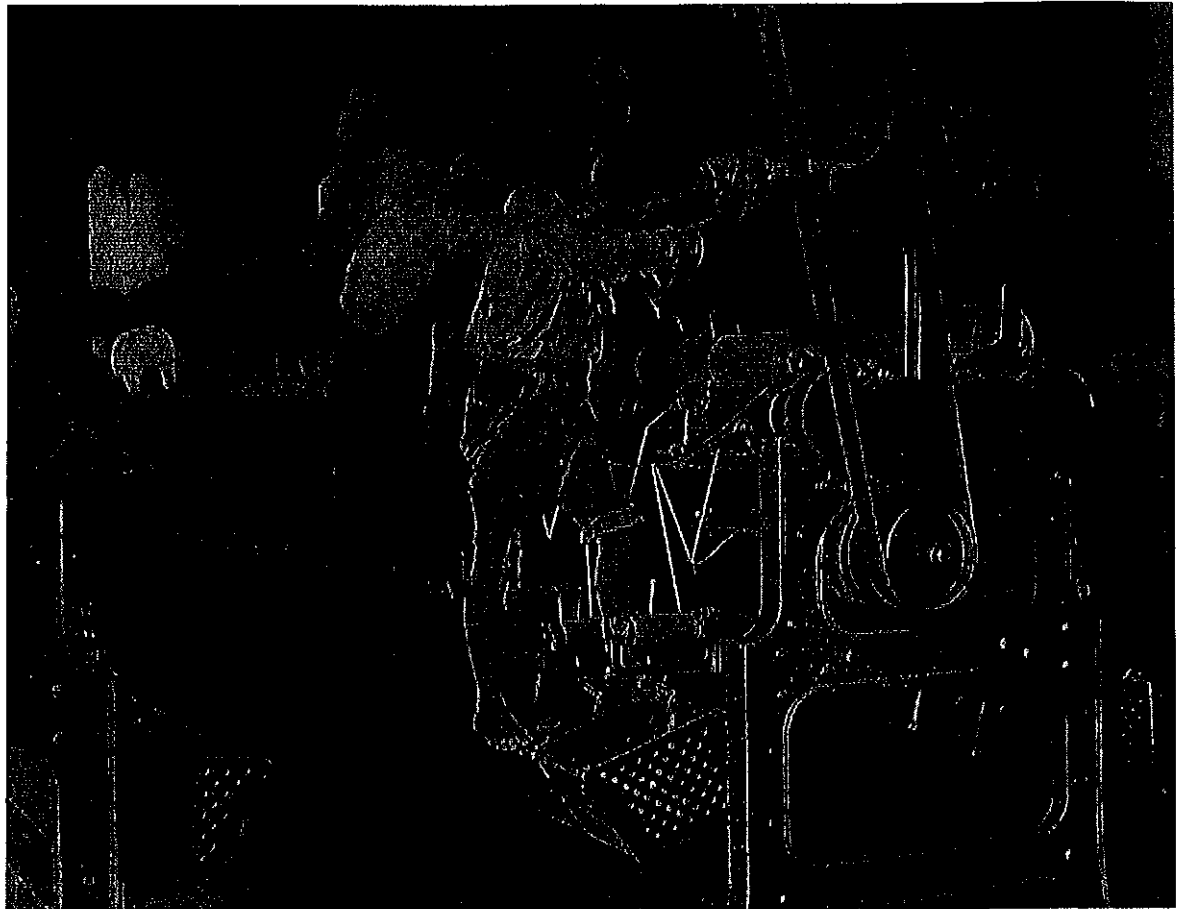
Primary Sources are:	Secondary Sources are:
Analyzing Evidence: 1. 2. 3. 4.	Analyzing Evidence (continued): 5. 6. 7.

Analyze the evidence provided:

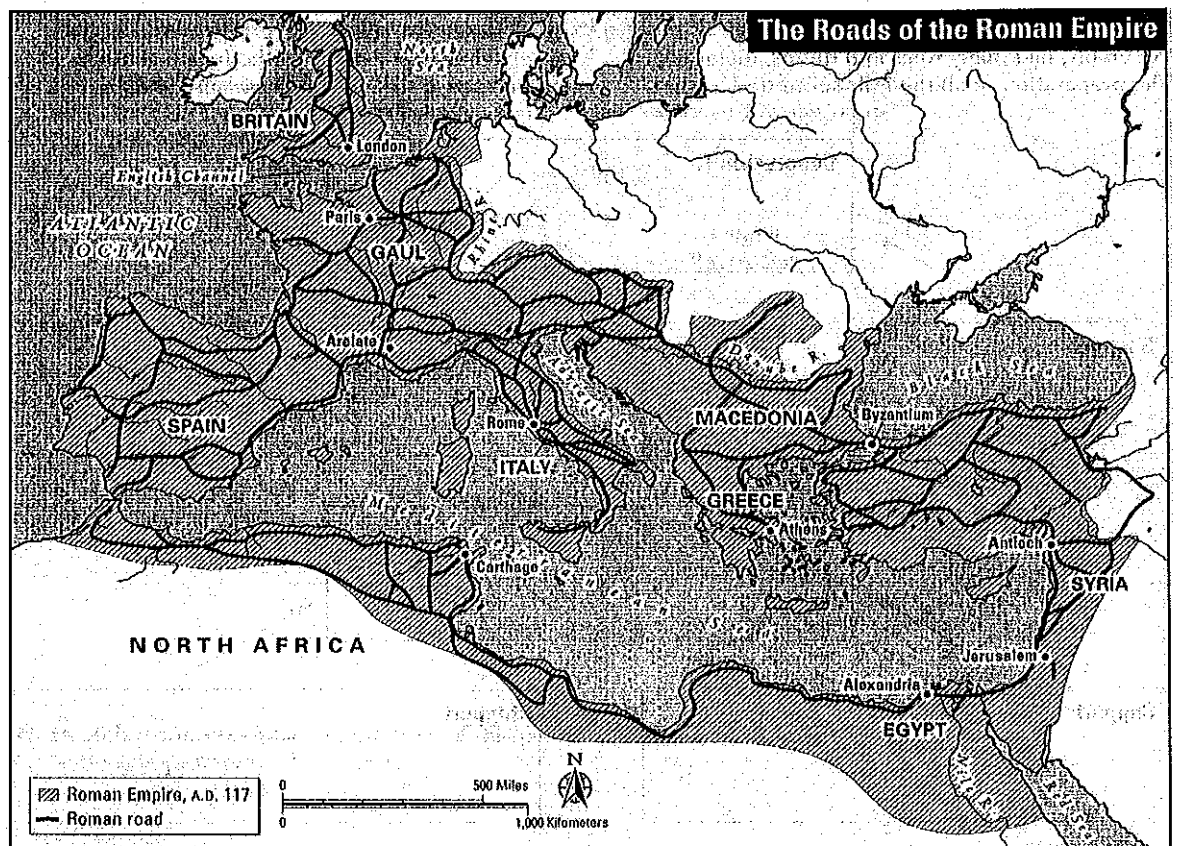
Document A: "The Mill" by Lewis Hine, American Sociologist, Photographer & Social Reformer, 1909)	Document B: Map of Roman Empire Roads, www.maps101.com , Teacher resource website
Source:	Source:
Main Idea:	Main Idea:
Audience:	Audience:
Purpose:	Purpose:
Context:	Context:
Point of View:	Point of View:
Bias / Reliability:	Bias / Reliability:

Document C: "On Crimes and Punishment" (1764) by Cesar Beccaria, Philosopher & social reformer	Document D: Political Cartoon, Lisa Benson, 05/10/2013, www.media.townhall.com
Source: Main Idea: Audience: Purpose: Context: Point of View: Bias / Reliability:	Source: Main Idea: Audience: Purpose: Context: Point of View: Bias / Reliability:
Document E: Infographic, UN High Commission on Refugees, 2015 Source: Main Idea: Audience: Purpose:	(Document E cont'd) Context: Point of View: Bias / Reliability:

Doc A: The Mill
(1909) photograph
by Lewis Hine,
American
Sociologist &
Reformer

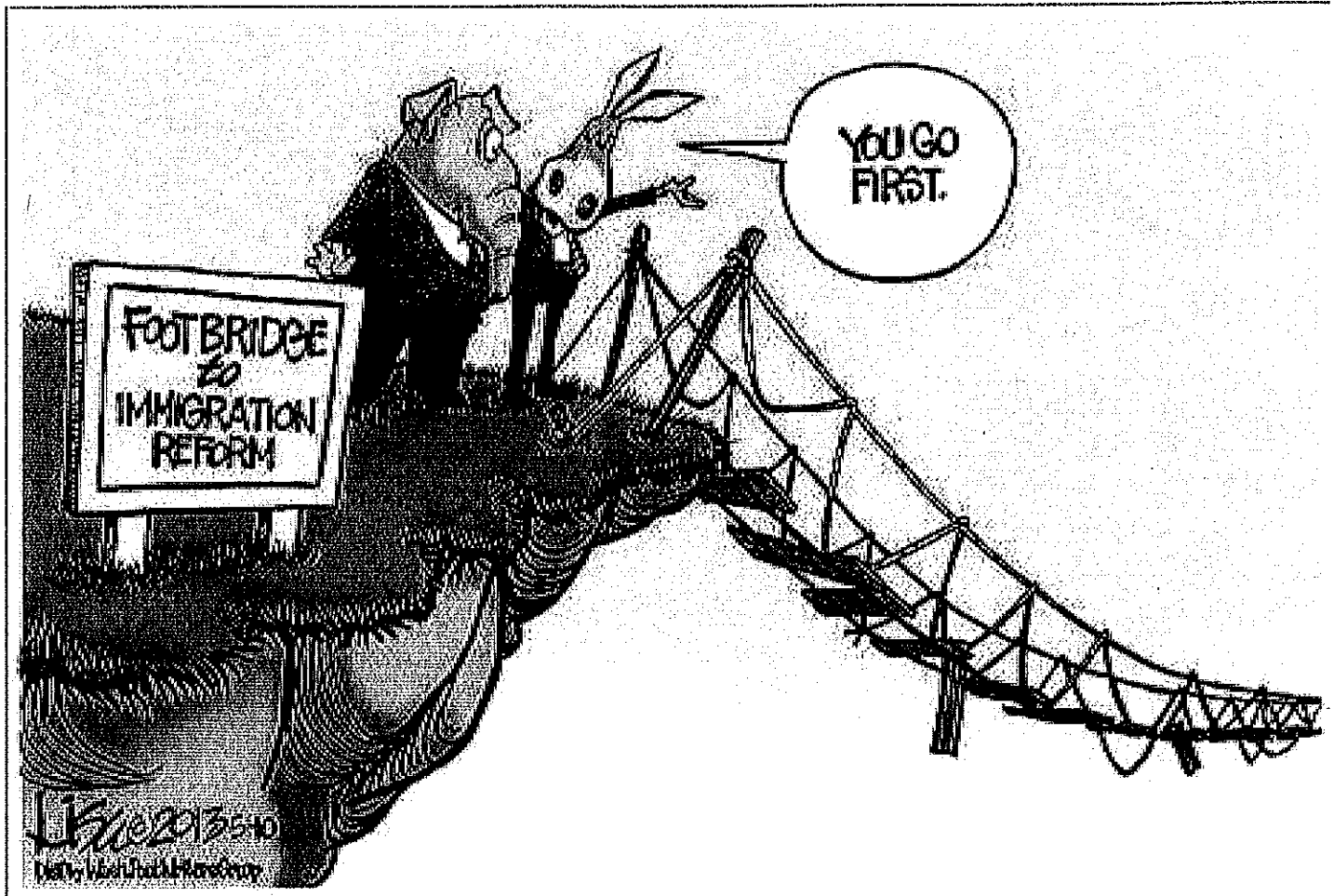


Doc B: Map,
www.maps101.com,
Teacher Resource
Website



Doc C: *"A strange consequence that necessarily follows from the use of torture is that the innocent person is placed in a condition worse than that of the guilty, for if both are tortured... he either confesses the crime and is condemned, or he is declared innocent and has suffered a punishment he did not deserve."*

- Excerpt, *On Crimes and Punishments* (1764) by Cesar di Beccaria, Enlightenment philosopher & reformer



Doc D: Immigration Reform political cartoon, Lisa Benson (5/10/2013)
<http://media.townhall.com/Townhall/Car/b/lb0510cd20130509083451.jpg>